

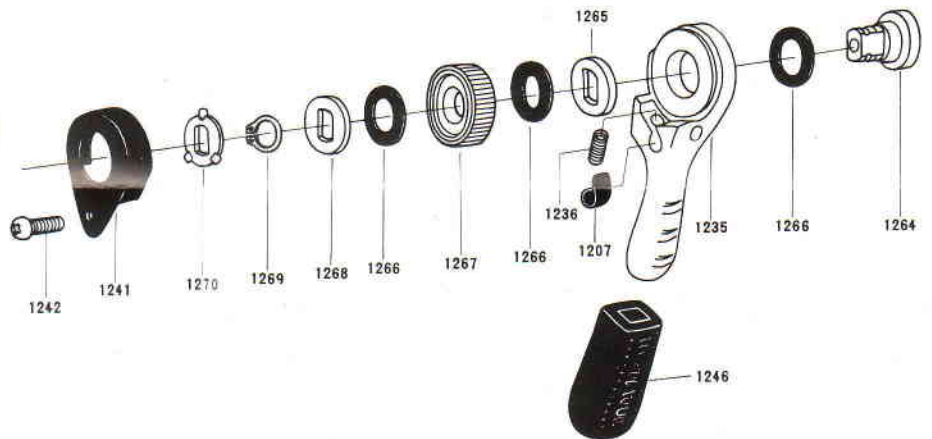
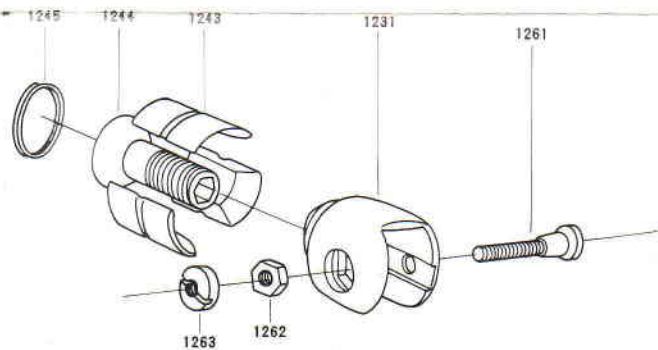
HANDLE BAREND CONTROL LEVER

THE FEATURE OF SUN TOUR POWER SHIFT



This lever has been designed no frictional resistance at all as compared with other ordinary levers.

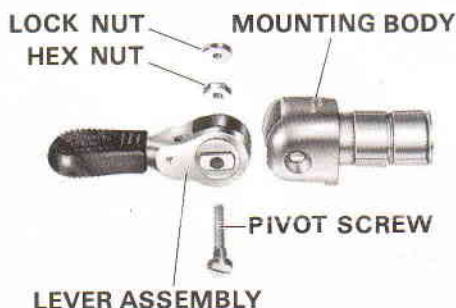
Every lever requires certain friction so that it can stay on the selected speed position, but the POWER SHIFT has completely no frictional resistance on account of the small notches built in the lever, saying tick-tack, tick-tack, at the time of speed selection.



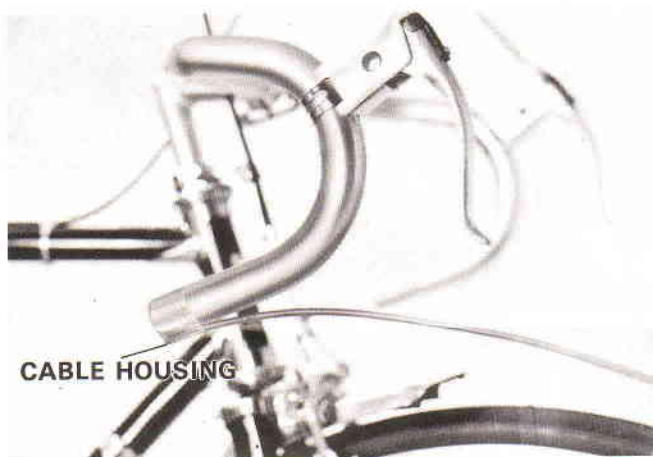
MAEDA INDUSTRIES, LTD.

Head Office : No. 1 Minami Koyochō 2-cho, Sakai, Osaka, Japan
 Cable Address: 888 SAKAI, P.O. Box SAKAI-38, Phone: 0722(38)4561~6, TELEX: 5374-377
 Mihara Plant : 97 Tannan Miharacho, Minamikawachigun, Osaka, Japan
 Phone: 0723 (61) 1888~90 (61) 3211~2
 TOKYO Service Station: 5-13 Ueno, Taitoku, Tokyo Phone: 03(832)6895~6
 U.S.A. Office : 342 MADISON AVENUE, NEW YORK, N.Y. 10017 Phone: (212) 687-4312

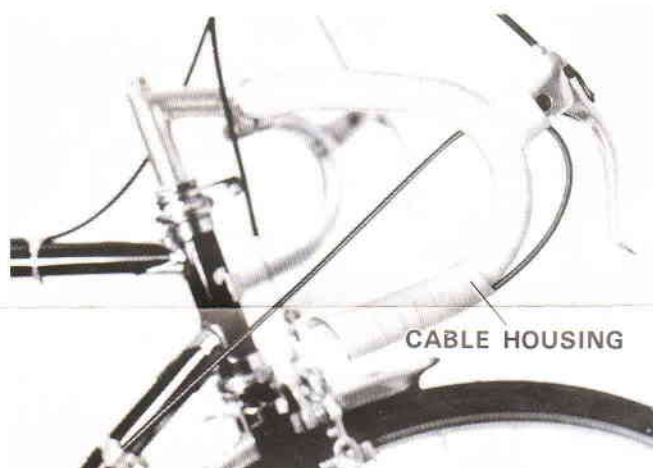
ASSEMBLY INSTRUCTIONS



Step 1. Detach lever assembly from mounting body of control by removing pivot screw.



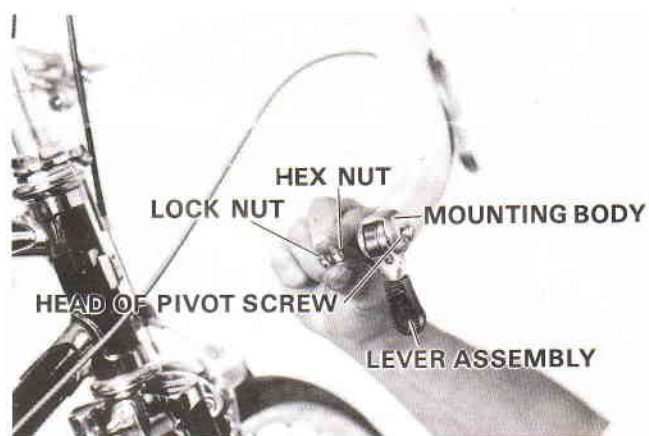
Step 2. Position one of the long cable housing on the bottom of the end of the handlebar with a piece of Scotch tape.



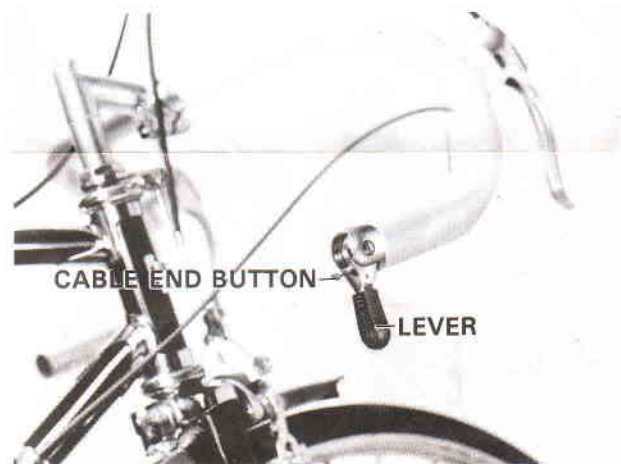
Step 3. Start handle bar tape on top of handlebar approximately 2" from handlebar stem. Tape around brake lever then begin taping cable housing to handlebar starting at approximately the first bend of the handlebar. Continue taping handlebar and housing and tuck any excess tape into end of handlebar.



Step 4. Insert mounting body, keeping "PAT. SUNTOUR" mark facing upward, into end of handlebar securing the excess tape. Make sure that the housing fits securely in the mounting body cable hole. Then tighten expander with 6 mm. hex wrench.



Step 5. Replace lever assembly into mounting body and fix pivot screw.



Step 6. Install cable through lever, mounting body and cable housing.